



**Victorian Coastal Council**

## ANNUAL REPORT 2006–07



Published by the Victorian Coastal Council, Melbourne, September 2007  
Victorian Coastal Council  
2/8 Nicholson Street  
East Melbourne Vic 3002  
Telephone (03) 9637 9456  
Facsimile (03) 9637 8592

Also published on [www.vcc.vic.gov.au](http://www.vcc.vic.gov.au)

© The State of Victoria, Victorian Coastal Council 2007

This publication is copyright. No part may be reproduced by any process except in accordance with the provisions of the *Copyright Act 1968*.

Authorised by the Victorian Government, 8 Nicholson Street, East Melbourne.  
Printed by Big Print, 45 Buckhurst Street, South Melbourne.

ISSN 1327-659X  
ISSN 1327-659X (Online)

### **General Disclaimer**

This document may be of assistance to you, but the State of Victoria and its employees do not guarantee that the publication is without flaw of any kind or is wholly appropriate for your particular purposes and therefore disclaims all liability for any error, loss or other consequence which may arise from you relying on any information in this publication.

### **Photo Acknowledgements**

Cover Images (R to L):

- Julie Mason
- A. Newton
- Ian Walton
- Ian Walton

### **Acknowledgement of Country and Indigenous Australians**

The Victorian Coastal Council respectfully acknowledges the original custodians of what is now known as Victoria; their rich culture, deep affinity with the land and spiritual connection to it.



# Table of contents

|           |   |           |
|-----------|---|-----------|
| <b>1</b>  | <b>Mission Statement</b>  | <b>2</b>  |
| <b>2</b>  | <b>Chairman's Report</b>  | <b>3</b>  |
| <b>3</b>  | <b>Highlights</b>   | <b>4</b>  |
| <b>4</b>  | <b>Vision for the Coast</b>                                     | <b>7</b>  |
| <b>5</b>  | <b>Reporting Relationship and Functions</b>                     | <b>7</b>  |
| <b>6</b>  | <b>Council Activities</b>                                       | <b>8</b>  |
| <b>7</b>  | <b>Membership</b>   | <b>11</b> |
| <b>8</b>  | <b>Implementation of the <i>Coastal Management Act 1995</i></b> | <b>13</b> |
| <b>9</b>  | <b>Regional Coastal Boards</b>                                  | <b>21</b> |
| <b>10</b> | <b>Council Operations</b>                                       | <b>21</b> |
| <b>11</b> | <b>Budget and Expenditure</b>                                   | <b>23</b> |
| <b>12</b> | <b>Disclosure Index</b>   | <b>24</b> |



PHOTO: PORTSEA OCEAN BEACH – IAN WALTON

# Mission Statement

*“The Victorian Coastal Council is the peak body that advocates for and champions the Victorian coast.”*

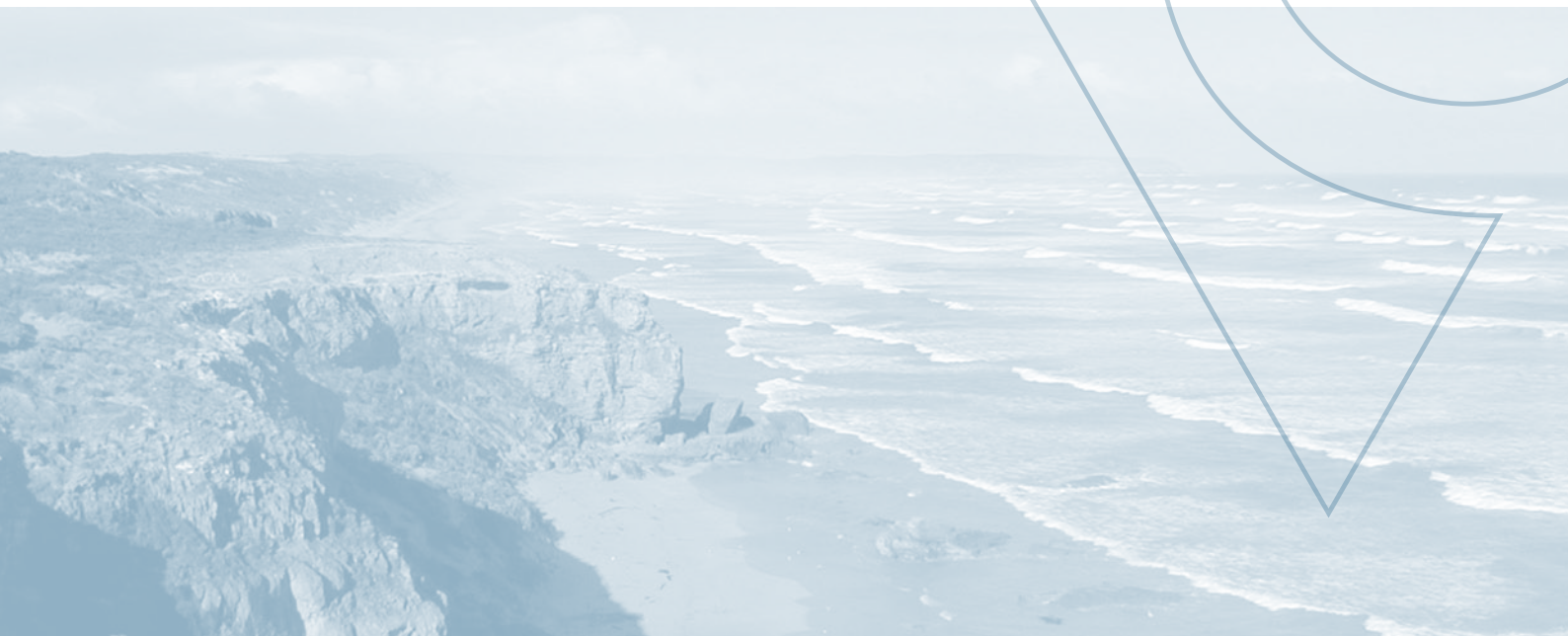


PHOTO: BISHOP'S ROCKS – LOUISE SHEBA



# 2

## Chairman's Report



On behalf of the Victorian Coastal Council, I have much pleasure in submitting the eleventh report of the Victorian Coastal Council to the Minister for Environment and Climate Change.

The Victorian Coastal Council and the three Regional Coastal Boards are an independent advisory structure established under the provisions of the *Coastal Management Act* 1995. In 2006/07 Council and the Boards continued to provide independent advice to the Minister for Water, Environment and Climate Change, undertake state wide and regional strategic planning, and advocate for the coast; an environment cherished by Victorians.

In July 2006, work began on the review and revision of the Victorian Coastal Strategy (VCS) (2002). The VCS (2002), developed by Council, establishes the overall framework for sustainable planning and management of the Victorian coastal and marine environment. During the review, Council representatives met with a wide range of stakeholders to obtain feedback on the effectiveness of the VCS (2002).

I am pleased to report that the review found that there was broad support for the high level principles of the VCS (2002), and that 93% of the Actions had been implemented, or were on-going or in progress. The VCS (2002) has been recognised internationally in a number of fora as a leading-edge example of a framework for Integrated Coastal Zone Management.

A draft VCS (2007) is being developed, and will include new directions on climate change and marine planning and management, the recommendations of *Coastal Spaces 2006*, provide more clarity around the principles for coastal planning, and give greater recognition to the role of Local Government on the coast. The VCC will be seeking public submissions on the draft Strategy in late 2007.

In September 2006 Council welcomed the release of the *Coastal Spaces Landscape Assessment Study: State Overview Report*, and associated local level documents – a joint project between Council and the Department of Sustainability and Environment (DSE). These documents provide an overview of the state's significant coastal landscapes and outline a number of recommendations on how the management and protection of these important landscapes can be better achieved through planning schemes. Council is pleased that the State Government has committed \$600,000 towards the implementation of the study's recommendations. It is with great pleasure that I also note that the Coastal Spaces Landscape Assessment Study won the 2007 Planning Institute of Australia (PIA) *Excellence in Rural and Regional Planning* award at the PIA National Congress in Perth.

Earlier this year Council, in association with Coast Action/Coastcare, hosted the eighth annual Victorian Coastal Awards for Excellence, recognising outstanding contributions to the management, protection and restoration of the coast. All nominations and projects were of a high quality and covered many aspects of coastal planning and management. It is pleasing that the Awards continue to be recognised by the Minister, stakeholders, managers and the community alike as a significant opportunity to recognise and acknowledge achievements made in Integrated Coastal Zone Management.

Regional Coastal Boards continue to contribute significantly to Integrated Coastal Zone Management. Earlier this year the Minister for Water, Environment, and Climate Change endorsed the Boating Coastal Action Plan prepared by the Central Coastal Board, after approval from Council in June 2006. The Gippsland Estuaries Coastal Action Plan, prepared by the Gippsland Coastal Board, was approved by Council and also endorsed by the Minister. I am pleased to acknowledge the enormous amount of work, particularly with stakeholders, involved in developing these plans.

The end of this financial year marks the end of term for the current Council, and also the end of an era for me. As I step down as Chairman, after what has been a rich and wonderful experience over the past 12 years, I wish to thank the outgoing Council and wish my colleagues all the best for the future. I would particularly like to congratulate Libby Mears who has been appointed as new Chair of Council. There is still much to be done to ensure our coastline can withstand the human pressures that are ever-present, and to ensure our system of planning and management remains among the best.

A handwritten signature in dark ink that reads "Diane James". The signature is written in a cursive, flowing style.

**Diane James**  
Chairman

# 3 Highlights

## Review/Revision of the Victorian Coastal Strategy

The Victorian Coastal Strategy (VCS), developed by Council, establishes the overall framework for sustainable planning and management of Victorian coastal and marine environments.

The VCC reviewed the VCS (2002) during 2006/07, meeting with over thirty stakeholders to discuss their observations about the effectiveness of the implementation of VCS (2002). This included meetings with most outer-coast Local Government, all relevant State agencies, and several peak bodies and conservation organisations. Council also advertised for public submissions on the VCS (2002) during March/April 2007. The review process found that 93% of the VCS's (2002) Actions were implemented, ongoing, underway, or in progress.

The review revealed broad support for the high level principles of the VCS (2002). Some of the key achievements of the VCS (2002) included the:

- Proclamation of thirteen Marine National Parks and eleven Marine Sanctuaries
- *Coastal Spaces* project
- Five new Coastal Action Plans
- Continued increase of volunteer effort and community interest on the coast, supported by the Coast Action/Coastcare program
- Expansion of coastal National Parks
- Completion of Regional Catchment Strategies out to the State marine limit (3nm offshore).

Whilst many coastal issues persist, there are also a number of new challenges emerging on the coast. In response, the revised VCS will include:

- Stronger directions and a precautionary approach to climate change
- Greater emphasis on marine planning and management
- Stronger principles for planning, including the recommendations of *Coastal Spaces* 2006
- Initiatives to strengthen Victoria's coastal management capacity, including better recognition of the role of Local Government
- A proposed resolution for on-going and historically difficult issues such as coastal dependent uses and old and inappropriate subdivisions

To inform the development of a draft VCS (2007) three sub-projects were also conducted:

- Victorian Coastal and Marine Environment - Community Attitudes and Behaviour Market Research
- A Levels of Service Framework for the Victorian Coast
- Economic Value of the Victorian Coast

A draft VCS (2007) is being developed by the VCC with support from the DSE, and the VCC will be welcoming public submissions on the draft Strategy later in 2007.

## Coastal Spaces Initiative

Council welcomed the release of the *Coastal Spaces Landscape Assessment Study: State Overview Report*, and associated local level documents, by the Minister for Planning in September 2006. These documents provide an overview of the state's significant coastal landscapes and outline a number of recommendations on how the management and protection of these important landscapes can be better achieved through planning schemes. The State Government has committed \$600,000 towards the implementation of the study's recommendations (see page 15 for further information).

The *Coastal Spaces Landscape Assessment Study* won the 2007 Planning Institute of Australia (PIA) *Excellence in Rural and Regional Planning* award at the PIA National Congress in Perth.

## Victorian Coastal Awards for Excellence

Council and CoastAction/Coastcare presented the eighth Victorian Coastal Awards for Excellence at a ceremony in April 2007 to recognise and acknowledge the achievements of those that have played a significant role in protecting and enhancing the values of Victoria's coast. Diane James and the Hon. John Thwaites, MP Minister for Water, Environment, and Climate Change, presented awards in eleven categories to:

- *John Ariens*, who has made an huge contribution to marine and heritage conservation across Victoria (Lifetime Achievement)
- *Harry Breidahl*, who has worked for more than 20 years as a marine and coastal educator, author, and researcher, and is a founding member of the Marine Education Society of Australia (Outstanding Individual Achievement)
- *Perkins Architects* for the sustainably designed Apollo Bay Eco Hostel (Building & Design)
- *East Gippsland Shire Council* which strategically and pro-actively manage some of East Gippsland's most intensely used coastal foreshore reserves (Coastal Conservation & Management by an Appointed Manager)

- *Friends of Mud Islands* for the care, maintenance and preservation of Mud Islands (Coastal Conservation and Protection by a Community Group)
- *Gippsland and East Gippsland Aboriginal Cooperative*, in partnership with *Coasts and Crown Land Management, DSE*, for the protection of an aboriginal burial site from coastal erosion (Cultural Achievement)
- *Marine Discovery Centre* for their Volunteer Training Program (Education)
- *Western Abalone Divers Association* for the innovative management of their zone to conserve abalone stocks (Innovation)
- *"Out of the Blue" radio program* for their weekly program which covers local and international marine and coastal issues (Media)
- *Friends of Wonthaggi Heathlands and Coastal Reserve* for creating a wetland on what was once degraded public land, to enhance water quality within the region (Water Quality)
- *Birds Australia* for working to promote coexistence between recreationists and beach-nesting birds on Victoria's beaches (Species Protection)

Council also congratulates the 360 Coast Action/Coastcare groups in Victoria who continue to deliver quality educational programs and activities involving a volunteer base of more than 20,000 people.

## Coastlinks

In March Council, together with the Regional Coastal Boards, launched 'Coastlinks' ([www.coastlinks.vic.gov.au](http://www.coastlinks.vic.gov.au)), a major coastal and marine web portal, which currently links to 62 stakeholder websites, and several hundred other web sites of related peak bodies, reference areas and interest groups.

'Coastlinks' was created to:

- Serve as a single entry point coastal and marine portal for Victoria
- Improve awareness of coastal and marine issues, values, planning and management
- Improve sharing and access to coastal and marine information and databases for the community and Government agencies
- Facilitate coordination and ensure an integrated approach is taken in planning and managing Victoria's coast and marine waters.

More than 16,081 visitors have accessed the portal since its launch on 2 March 2007.

## Coastal Action Plans

Council approved the Gippsland Estuaries Coastal Action Plan (Gippsland Coastal Board) under the provisions of the *Coastal Management Act 1995*. The Minister for Water, Environment and Climate Change endorsed both the Gippsland Estuaries Coastal Action Plan and the Central Coastal Board's Boating Coastal Action Plan (approved by Council in June 2006), bringing the total number of Coastal Action Plans (CAPs) to ten in the Western Coastal Region, four in the Gippsland Coastal Region and four in the Central Coastal Region.

## PEMSEA

Experiences and knowledge continue to be shared as a result of the Memorandum of Understanding (MoU) signed in 2004 between the Partnerships for Environmental Management of the Seas of East Asia (PEMSEA) and the DSE. Council are pleased to have facilitated the re-signing of this partnership in December 2006.

Diane James attended the East Asian Seas Congress in Haikou City, China, and jointly convened the workshop "Management Effectiveness of Marine Protected Areas – Report on IMPAC1 Outcomes" with DSE and Parks Victoria. Diane chaired a theme on "Ecosystem Based Management: from River Basins to Coastal Seas", presented on Leadership, and also presented to the Ministerial forum.

## Science Panel

An expert Science Panel was convened by Council's Science Sub Committee in the previous year comprising 24 eminent Victorian based scientists to provide advice to Council on emerging issues and knowledge gaps relevant to Victoria's coastal and marine environment. After a workshop in February 2006, the Science Panel published the report "Emerging Scientific Issues on Victoria's Coast" in August 2006, which was endorsed by Council, and provided to the Minister for Water, Environment, and Climate Change as advice. The report was also widely distributed to stakeholders and is available on the VCC's website.

Three major areas of current and emerging environmental concerns are identified in the report:

- Extending our understanding of the effects of climate change beyond changes in average climate to consider the effects of increasing environmental variability;



- Understanding the precise nature of the links between catchments, estuaries and surrounding marine areas;
- Understanding the ecological consequences of coastal development.

Two major issues are identified regarding Victoria's technical capacity to respond to emerging environmental issues:

- Ensuring that data collection provides appropriate information about the state of Victoria's marine and coastal environments;
- Matching Victoria's technical capacity to scientific needs.

## Two Bays 2007

Two Bays 2007 was launched by Diane James in January 2007 at St Kilda Pier. The Two Bays program utilised the Pelican, a highly visible 62 foot catamaran, to undertake a marine science and community education program highlighting the links between catchment-based activities and the health of Port Phillip and Western Port. The ten day voyage involved continuous water quality testing, community monitoring of seagrass communities in both bays with the Sea Search program, and community engagement activities at seven different piers, highlighting opportunities to get involved in protecting water quality. Two Bays 2007 was an excellent example of an integrated program and was developed by Pelican Expeditions in partnership with Parks Victoria, Victorian Coastal Council, EPA Victoria, Port Phillip and Westernport Catchment Management Authority, Melbourne Water, Coast Action/Coastcare, and the Marine Discovery Centre.

## Other Partnerships

The Victorian Coastal Council supported the International Youth Coastal Conference with a bronze sponsorship package (\$5,000). The conference was held on Port Phillip Bay from 15-18 October 2006.

## Council Members in Queens Birthday Honours List

Council is pleased to note that Council members Duncan Malcolm and Lynn Murrell were awarded a Member of the Order of Australia and a Medal of the Order of Australia, respectively, in the Queens Birthday Honours list in June 2007.

## Other Coastal Highlights in Victoria

- The first report card for the Great Ocean Road Region Strategy, released on the 75<sup>th</sup> anniversary of the opening of the Great Ocean Road, showed that 95% of the Strategy's 154 recommended Actions have commenced or are well on their way to being delivered.
- The inaugural 2006 International Youth Coastal Conference in October provided students with skills in marine and coastal education, showcasing students who are optimistic, have a sense of future, are capable public speakers and can communicate ideas in many different forms.
- The State Government's budget announcements during 2006/07 of:
  - \$10 million for major upgrades to key piers and jetties within Port Phillip and Western Port
  - \$8 million to protect beaches and foreshores through a program of beach renourishment in Port Phillip Bay
  - \$4.8 million to upgrade facilities in Victoria's caravan parks and camping grounds
  - \$2.8 million to upgrade Point Gellibrand Coastal Heritage Park
  - \$12 million to upgrade camping and recreation facilities for visitors in some of Victoria's favourite National Parks, including National Parks on the coast such as Wilson's Promontory and Port Campbell National Parks
  - \$12.6 million to implement the new Aboriginal Cultural Heritage Act which protects Aboriginal heritage as an integral part of planning processes, simplifying the current system and providing increased certainty for developers and Aboriginal groups
  - \$6 million for a range of initiatives to improve water quality and reduce algal blooms in the Gippsland Lakes, and ensure the survival of the surrounding wetlands
- The Victorian Estuaries Network presented 'Vic Estuaries 06' on the Bellarine Peninsula in December 2006. Attended by more than 100 participants, 'Vic Estuaries 06' opened with a forum at Queenscliff and was followed by a field day visiting nearby estuaries.
- Thirteen approved management plans were released by Parks Victoria which covered seven of Victoria's Marine National Parks, and eight Marine Sanctuaries.
- Work commenced on the Land and Biodiversity White Paper, which aims to achieve the right balance between land, coastal and marine uses, and the sustainable management of natural resources.
- New members were announced for the three Regional Coastal Boards in August 2006.
- The Year of the Surf Lifesaver, marking the 100th anniversary of Surf Life Saving in Australia, was celebrated at a number of events along the coast.



# 4 Vision for the Coast

*“A biologically rich and diverse coastal and marine environment for our use and enjoyment today and for our children tomorrow.”*

PHOTO: WILSON'S PROMONTORY – IAN WALTON

## 5 Reporting Relationship and Functions

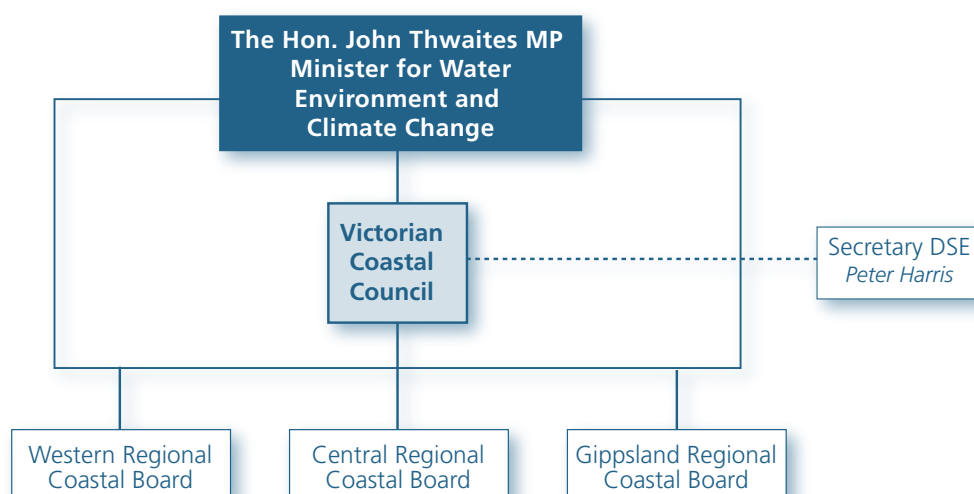
The Victorian Coastal Council (VCC) is established under the *Coastal Management Act 1995* as the peak advisory body on coastal issues in Victoria. During the reporting period, the VCC was accountable to the Minister for Water, Environment, and Climate Change the Hon. John Thwaites MP (formerly the Minister for Environment).

The role of the VCC is to provide strategic direction and improve the coordination of coastal planning and management in Victoria.

As an independent body accountable to the Minister for Water, Environment, and Climate Change, the Council is provided with a budget and secretariat support through the Sustainability and Environment Portfolio.

The functions of the Council under the *Coastal Management Act 1995* are:

- To undertake statewide strategic coastal planning
- To prepare and submit to the Minister a draft Victorian Coastal Strategy
- To provide advice to the Minister
- To facilitate the operation of Regional Coastal Boards
- To monitor the development of Coastal Action Plans
- To coordinate the implementation of the Victorian Coastal Strategy and Coastal Action Plans
- To prepare and publish guidelines
- To liaise with and encourage the cooperation of Government departments, public authorities, municipal councils, industry, community groups and persons and bodies involved in the planning, management and use of the coast in furthering the objectives of the Act
- To provide opportunities for the public and interested groups to be informed of and involved in the work of the Council
- To encourage the work of volunteers in using and conserving coastal resources
- To give consideration to the needs of Aborigines and other interested groups in relation to the coast.

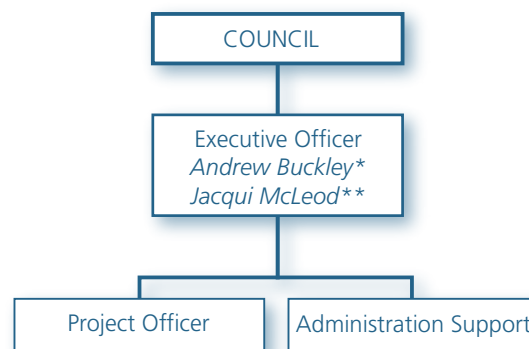


# Council Activities

## 6.1 VCC Operational Chart

## 6.2 Council Meetings

Seven Council business meetings were held during 2006/2007. Council's meeting in October 2006 included a two day tour of Victoria's west coast to visit key stakeholders and sites, and experience coastal and marine issues first hand. In addition to this, a combined meeting between the three Regional Coastal Boards and Council took place in December 2006.



\*Executive Officer until the 30 April 2007  
 \*\*Acting Executive Officer from the 30 April – 30 June 2007

### Business meetings:

10 August 2006  
 13 October 2006  
 7 December 2006  
 8 February 2007  
 29 March 2007  
 10 May 2007  
 7 June 2007

### Attendance at Council business meetings:

| Member            | Attendance |
|-------------------|------------|
| Diane James       | 6          |
| Duncan Malcolm    | 5          |
| Liz Johnstone     | 5          |
| Lynn Murrell      | 7          |
| Rob Gell          | 7          |
| Neil McCarthy     | 6          |
| Maggie Baron      | 7          |
| John Sweetman     | 5          |
| Michael Keough    | 7          |
| Genevieve Overell | 4          |
| Libby Mears       | 3 of 3     |

## 6.3 General Business

### Victorian Coastal Council Business Plan 2004–2007

Priority actions and directions of Council are guided by the Business Plan.

### Appointment of Libby Mears

Cr. Libby Mears was appointed to the Victorian Coastal Council from 20 March 2007 to 30 June 2007 to fill a casual vacancy.

### Presentations given by Council representatives

- Review and revision of the Victorian Coastal Strategy – various presentations, including a presentation to each Regional Coastal Board
- East Asian Seas Congress in Haikou City, China – workshop on “Management Effectiveness of Marine Protected Areas – Report on IMPAC1 Outcomes” and presentation on Leadership
- Victorian Coastal Planning and Management – RMIT University
- Youth Coastal Conference – forum panel Chair and member
- Urban Development Institute of Australia – forum panel member
- DSE's Biodiversity Evaluation Summit

### Presentations received by Council

- Marine Education in Victoria - Mark Rodrigue, Marine, Coastal and Catchment Officer, Parks Victoria and Franca De Luca, Information, Interpretation and Education Officer, Parks Victoria
- Visioning Sustainable Futures for the Victorian Coast 2046 - Professor Sohail Inayatullah, University of the Sunshine Coast
- Monitoring, Evaluation and Reporting Framework for Gippsland - Duncan Malcolm, Chair, Gippsland Coastal Board
- Market Research – Victorian Coastal and Marine Environment – Jasmine Hoyer, Ipsos.

### Submissions made by Council

- Emerging Scientific Issues on Victoria's Coast - Dr Graham Mitchell, DSE/DPI Chief Scientist
- Victorian Coastal Policy - The Honourable Justice Stuart Morris, President, Victorian Civil and Administrative Tribunal
- Marine Discovery Centre, Queenscliff - The Hon. John Thwaites MP, Minister for Water, Environment, and Climate Change
- Emerging Scientific Issues on Victoria's Coast - The Hon. John Thwaites MP, Minister for Water, Environment, and Climate Change
- Aboriginal Cultural Heritage Regulations – Aboriginal Affairs Victoria
- Desalination - The Hon. John Thwaites MP, Minister for Water, Environment, and Climate Change
- Land and biodiversity at a time of climate change discussion paper – Department of Sustainability and Environment
- Contributed to the whole of Government response to the Supplementary Environment Effects Statement for proposed channel deepening in Port Phillip Bay

**Victorian Coastal Council Media** (available at [www.vcc.vic.gov.au](http://www.vcc.vic.gov.au))

The following media releases were issued:

- Victoria to Salute Coastal and Marine Heroes (22 September 2006)
- Coastlinks: a Safe Harbour for Going Coastal (2 March 2007)
- Finalists Announced for Victorian Coastal Awards (26 March 2007)
- Sea Stars Come Out for 2007 Coastal Awards (27 April 2007)
- End of an Era for Coastal Champion (12 June 2007)

### **PEMSEA (Partnerships for the Environmental Management of the Seas of East Asia)**

Diane James attended the East Asian Seas Congress in Haikou City, China, and jointly convened the workshop "Management Effectiveness of Marine Protected Areas – Report on IMPAC1 Outcomes" with DSE and Parks Victoria. Diane chaired a theme on "Ecosystem Based Management: from River Basins to Coastal Seas", presented on Leadership, and also presented to the Ministerial forum.

#### **Other Partnerships**

The Victorian Coastal Council supported the International Youth Coastal Conference with a bronze sponsorship package (\$5000). The conference was held on Port Phillip Bay from 15-18 October 2006.

#### **Conference Attendance**

Council representatives attended the following conferences:

- East Asian Seas Congress, Haikou City, China
- International Eco Tourism Conference
- Fifth National Conference on Tourism Futures
- International Youth Coastal Conference

#### **Council's Chairman, Diane James participated in the following National role:**

- Chairman of Judges, Banksia Awards 2006

## **6.4 Sub-committees**

Council operated two standing sub-committees. In addition, a special purpose sub-committee was operated to manage the Victorian Coastal Awards for Excellence.

#### **Standing Sub-committees and their purpose are:**

*Planning Sub-committee:* to ensure co-ordination of Victorian planning as it affects the coast, advise on Coastal Action Plans, coastal development and approval arrangements for the coast, and to oversee the preparation of coastal guidelines.

- Maggie Baron (Chairman)
- Neil McCarthy
- Genevieve Overell (delegate Peter Allen, Executive Director Statutory Systems, DSE, attended sub-committee meetings)
- Liz Johnstone

Five meetings were held during 2006/2007: 1 August, 21 November, 7 February, 27 March and 2 May.

The Sub-committee:

- Reviewed and made recommendations to Council on the Estuaries Coastal Action Plan (GCB)
- Reviewed and made recommendations to Council on the draft Coastal Access Guidelines for the West Coast, prepared by the WCB
- Reviewed and made recommendations to Council on the scoping document for a Levels of Service Framework for the Victorian Coast.
- Reviewed and made recommendations to Council on the Aboriginal Heritage Regulations 2007
- Provided advice to Council on the review and revision of the Victorian Coastal Strategy
- Reviewed and made recommendations to Council on project briefs and tenders for the Economic Value of the Coast study, and the Coastal and Marine Market Research, two sub-projects of the revision of the Victorian Coastal Strategy
- Explored options, and made recommendations to Council on the potential review and revision of the Siting and Design Guidelines for Structures on the Victorian Coast.

Diane James, Lynn Murrell and Duncan Malcolm also attended Planning Sub-committee meetings where the review and revision of the Victorian Coastal Strategy was an agenda item.



**Diane James presenting at the East Asian Seas Congress in Haikou City, China.**



**The re-signing of the Memorandum of Understanding between PEMSEA and the DSE in December 2006.**



PHOTO: WILSON'S PROMONTORY  
– IAN WALTON

*Science Sub-committee:* to provide strategic advice to Council on current and emerging scientific issues relevant to coastal and marine environments.

- Prof. Michael Keough (Chairman)
- Rob Gell
- Duncan Malcolm

An expert Science Panel was convened by the Science Sub-committee in the previous year comprising 24 eminent Victorian based scientists to provide advice to Council on emerging issues and knowledge gaps relevant to Victoria's coastal and marine environment. After a workshop in February 2006, the Science Panel published the report "Emerging Scientific Issues on Victoria's Coast" in August 2006, which was endorsed by Council, and provided to the Minister for Water, Environment, and Climate Change as advice. The report was also widely distributed to stakeholders and is available on VCC's website.

Three major areas of current and emerging environmental concern are identified in the report:

- Extending our understanding of the effects of climate change beyond changes in average climate, to consider the effects of increasing environmental variability;
- Understanding the precise nature of the links between catchments, estuaries and surrounding marine areas;
- Understanding the ecological consequences of coastal development.

Two major issues are identified regarding Victoria's technical capacity to respond to emerging environmental issues:

- Ensuring that data collection provides appropriate information about the state of Victoria's marine and coastal environments;
- Matching Victoria's technical capacity to scientific needs.

## 6.5 Reference Groups

Two reference groups operated in 2006/07 to inform the review and revision of the Victorian Coastal Strategy.

*Marine Reference Group:*

- Prof. Michael Keough – University of Melbourne (Chairman)
- Tim Allen - Australian Government NRM Facilitator (Coasts and Marine)
- Rod Gowans – Independent
- Alison Stone – Independent
- Chris Smythe – Australian Conservation Foundation
- Assoc. Prof. Geoff Wescott – Deakin University

*Tourism Reference Group:*

- John Sweetman (Chairman)
- Paul Albone - Tourism Victoria
- Roger Grant –Geelong Otway Tourism
- Brett Cheatly – Parks Victoria
- Helen Gwilliam – Department of Sustainability and Environment
- Dick Ford - Department of Sustainability and Environment
- Nick Hunt – Tourism Alliance Victoria
- Andrew Buckley – Executive Officer, Victorian Coastal Council Membership



# 7 Members of the Victorian Coastal Council are:

## **Chairman**

### **Diane James**



Diane James was appointed an inaugural member of the Victorian Coastal Council in 1995. She has been Chairman since 1997 and has been involved in every aspect of the development of the Victorian Coastal Strategy, the State Government's policy for the planning and management of Victoria's entire 2000 km coastline. Throughout the past decade, Diane has played a role on a number of State and Commonwealth Government boards and committees and has made a significant contribution to Victoria's position as a national and international leader in coastal planning and management. She has presented papers in China, France, Portugal and the USA, as well as throughout Australia.

Diane chaired a number of committees, for the National Oceans Office, involved in implementation of Australia's Oceans Policy in the South East marine region. She has been an active campaigner for the introduction of marine protected areas in this State and received a Recognition Award from the Deputy Premier in March 2003 for her "significant contribution to the development of a system of marine national parks and sanctuaries." In the private sector, Diane runs a company involved in marketing, distribution, and international export.

## **Members**

### **Duncan Malcolm**



Duncan Malcolm lives on a farm at Boisdale in Gippsland. He has a strong interest in natural resource management developed through various positions he has held and has worked hard to develop strategic linkages between resource managers and participants at regional, State and Federal levels. Duncan's current positions include Chairman of the Victorian Environmental Assessment Council, Chairman of the Gippsland Coastal Board and a member of a number of other committees and bodies. He is a former Chairman of both the Irrigation Association Australia and the Lakes and Wilderness Tourism Association Inc.

### **Lynn Murrell**



Lynn Murrell is a former Secondary School Teacher and a Councillor for the City of Portland for over 18 years. Mr Murrell owns a primary production property at Cape Nelson. Lynn has been extensively involved representing his community at a local, regional, State and Federal level and is a current member of the Glenelg-Hopkins Catchment Management Authority, Victorian Economic, Environment and Social Advisory Council, Greater Green Triangle Area Consultative Committee Good Governance Panel and the Natural Resources Conservation League. Lynn is also Chair of the Western Coastal Board. In April 2005 Lynn completed a solo walk of Victoria's coastline from the South Australian border to the New South Wales border. During the 103-day walk Lynn raised awareness about Victoria's coastline and assessed the feasibility of a state coastal walking trail.

### **Liz Johnstone**



Liz Johnstone is a Senior Policy Advisor with the Municipal Association of Victoria. She has extensive experience in local government and community associations as a former councillor and Mayor of the City of Port Phillip, the Association of Bayside Municipalities and the Australian Local Government Women's Association. At Port Phillip her particular area of interest was in the planning and environmental area. She is also Chair of the Central Coastal Board. Liz trained as an accountant and has a background in small business.

### **Rob Gell**



Rob is a coastal geomorphologist by training; he taught Environmental Science and Physical Geography at tertiary level, then for twenty-eight years he has presented television weather. In his professional life he works as an environmental and communications consultant and is Chairman of Access Environmental Pty Ltd. He is also a company director, and a published author and a photographer. He is the President of Greening Australia Victoria and national Vice-President, Chairman of the Mornington Peninsula and Westernport Biosphere Reserve Foundation Ltd. and serves on the board of Surfing Victoria. Rob is a Fellow of the Royal Geographical Society and an Inaugural Fellow of the Environment Institute of Australia and New Zealand. He is the savewater!® ambassador and was Environment Ambassador to the Melbourne 2006 Commonwealth Games. He has been a local government councillor and was a councillor of the ACF. He is also the Patron of the Geography Teachers Association of Victoria, Wildlife Victoria, Life Education Victoria, a Mentor of the Environmental Jobs Network and has been made a Life Ambassador for Australia Day.



### **Neil McCarthy**

For the last 25 years, Neil has worked in the field of natural resource management in Victoria and Japan and has experience in commercial forestry, business management, park management and endangered species conservation. Neil played a lead role in establishing Melbourne Parks and Waterways and Parks Victoria. Parks Victoria, established in 1996, is recognised as one of the world's leading park organisations. It is also unique in that it manages a whole system of parks from conservation to urban. He has been responsible for introducing and establishing a strategic management approach to the Parks industry in Australia. This has included introducing prudent business management practices as well as innovative improvements in conservation management. Neil was responsible for establishing the Parks Forum that is Australia and New Zealand's peak industry organisation. Neil is the chair of Parks Forum. Neil's qualifications include a Bachelor of Forest Science and a Masters Degree in Business Administration. Neil completed Australia's premier leadership program, Leadership Victoria in 1999 and was former Chair of the Leadership Victoria's Fellows Group. Neil is also a Director of Australia's leading environmental education group – The Gould Group.



### **Maggie Baron**

Maggie Baron is the director of Baron Planning and Projects P/L, a Melbourne based public policy, planning and heritage consultancy. She is a sessional member of Planning Panels Victoria and serves as a Panel member considering Planning Amendments and Environment Effects Statements. She has also been appointed to the MCG re-development and Barwon Heads Bridge Ministerial advisory committees. Maggie has extensive experience in heritage, planning and cultural resource management and is a regular provider of professional development programs. She has also initiated professional development programs to build capacity in relation to Indigenous heritage management. Maggie has a strong commitment to governance and is the Deputy Chair of the Department of Primary Industry's audit and risk management steering committee.



### **Michael Keough**

Professor Michael Keough is a leading marine scientist with an international reputation in marine ecology. He leads a research team at the University of Melbourne that has been successful in demonstrating the impacts of pest species in Victorian waters. He is a frequent contributor to state and national workshops on coastal management, and has advised state governments on marine monitoring. He contributed to State of the Marine Environment reports at both state and national level. Michael serves on the EPA Scientific Advisory Panel and is a member of the Australian Research Council's College of Experts.



### **John Sweetman**

John Sweetman AM has over 30 years experience in the tourism and hospitality industry, working with peak bodies and with industry both in Victoria and nationally. John was the foundation Executive officer of the Victorian Tourism Industry Council (VTIC). As managing director of J Sweetman & Associates Pty Ltd, he continues to work across the tourism and hospitality industries and with industry sector associations, including relationships with Tourism Victoria. John is the Chairman of the Tourism Accreditation Board of Victoria, Service Skills Victoria and Service Skills Australia. John was recognised for his contribution to the tourism industry in the 1996 Australia Day Honours.



### **Genevieve Overell**

Genevieve Overell is General Manager of the Office of Planning and Urban Design, Department of Sustainability and Environment. Genevieve has a Property Law background. She was a Partner at Sparke Helmore and previously KPMG Legal. With broad ranging Property Industry experience, Genevieve has been a Victorian Councillor of the Property Council of Australia, and Chair of the Australian Property Law Group, Victoria. With an interest in Corporate Governance, Genevieve is a frequent presenter at industry fora.



### **Libby Mears**

Cr Libby Mears is a current councillor and former Mayor of the Surf Coast Shire. Libby lives with her young family in a small coastal community and has been actively involved in many community issues advocating at local, state and federal levels. Libby is a former Director of G21 Geelong Regional Alliance, and is currently Deputy Chair of the Geelong Regional Library Corporation. Libby has been a champion for integrated coastal planning at the local level and chairs a joint working party between the Surf Coast Shire and the Great Ocean Road Coast Committee. Libby also serves on the Deakin University Community Reference Group.

Libby has a commitment to involving communities in decisions and actions that impact their lives, and strongly believes that engaged communities are strong, productive and dynamic. This is particularly important in promoting the sustainable use of our coastal resources and in responding to the challenges which lie ahead.

# 8 Implementation of the Coastal Management Act 1995

## 8.1 Objectives of the Coastal Management Act 1995

- (a) To plan for and manage the use of Victoria's coastal resources on a sustainable basis for recreation, conservation, tourism, commerce and similar uses in appropriate areas;
- (b) To protect and maintain areas of environmental significance on the coast including its ecological, geomorphological, geological, cultural and landscape features;
- (c) To facilitate the development of a range of facilities for improved recreation and tourism;
- (d) To maintain and improve coastal water quality;
- (e) To improve public awareness and understanding of the coast and to involve the public in coastal planning and management.

## 8.2 Strategic Coastal Planning

### 8.2.1 Coastal Spaces Project

Council has continued to direct a focus on strategic coastal planning through the *Coastal Spaces* project.

Victoria's coastal landscapes are some of the most spectacular and recognisable in the country, if not the world. The *Coastal Spaces Landscape Assessment Study*, undertaken as part of the State Government and VCC's *Coastal Spaces* Initiative, was developed to provide a comprehensive assessment of all coastal landscapes (outside metropolitan Melbourne) and provides detailed guidelines to help manage change that will inevitably take place across the coast.

In September 2006, the Minister for Planning released the first finalised product of the study - the *Coastal Spaces Landscape Assessment Study: State Overview Report*. The report provides an overview of the state's significant coastal landscapes and outlines a number of recommendations on how the management and protection of these important landscapes can be better achieved through planning schemes.

In addition to the *State Overview Report*, local level documents focusing on each coastal Local Government Area have been finalised. These documents provide more focused localised detail related to landscape character and significance, as well as specific planning scheme recommendations relevant to each Local Government. A CD of all documents that make up the *Coastal Spaces Landscape Assessment Study* has been compiled and is available from the VCC.

The State Government has committed \$600,000 towards the implementation of the study's recommendations. An important step now is to continue to work with Local Government to implement the study's findings. Coastal municipalities are currently working with the Department in the uptake of these funding opportunities.

### 8.2.2 Advice on Coastal Planning

Council approved the Gippsland Estuaries Coastal Action Plan prepared by GCB.

Council provided written advice to the Minister for Water, Environment, and Climate Change in relation to:

- Review and revision of the Victorian Coastal Strategy
- Future management of Erskine House, Lorne
- Repeal of the Waterfront Geelong CAP
- Emerging Scientific Issues on Victoria's Coast
- Marine Discovery Centre, Queenscliff
- Desalination



PHOTO: BUSHRANGER BAY – EVAN STAMPE

### 8.2.3 Coastal Action Planning – Regional Coastal Boards

Coastal Action Plan development status is outlined in Table 1.

**Table 1 Status of Coastal Action Plans (CAP) 2006/2007**

| RCB | CAP title  | Progress  |
|-----|--|---|
| CCB | Waterfront Geelong CAP (1999)                        | Repealed; superseded by the Corio Bay CAP.  |
| CCB | Corio Bay CAP (2005)                                 | Implementation.   |
| CCB | Mt Eliza to Point Nepean CAP (2005)                  | Implementation.   |
| CCB | Boating CAP (2006)                                   | Endorsed and gazetted by the Minister.  |
| GCB | Gippsland Lakes CAP (1999)                           | Implementation. Under review.   |
| GCB | Gippsland Boating CAP (2002)                         | Implementation.   |
| GCB | Integrated Coastal Planning for Gippsland CAP (2002) | Implementation.   |
| GCB | Estuaries CAP (2006)                                 | Endorsed and gazetted by the Minister.  |
| WCB | South West Victoria Regional CAP 2002                | Implementation Plan in place. Full review scheduled.                                      |
| WCB | Central West Victoria Regional CAP 2002              | Implementation Plan in place. Full review scheduled.                                      |
| WCB | South West Victoria Estuaries CAP 2002               | Implementation Plan in place. Full review scheduled.                                      |
| WCB | Central West Victoria Estuaries CAP 2005             | Implementation Plan in place. Full review scheduled.                                      |
| WCB | Lorne CAP 1998                                       | Implementation to be progressed largely through other plans.                              |
| WCB | Anglesea CAP 1999                                    | Implementation to be progressed largely through other plans.                              |
| WCB | Warrnambool CAP 1999                                 | Implementation Committee identified, Implementation Plan drafted.                         |
| WCB | Moyne CAP 2001                                       | Implementation Committee identified, Implementation Plan drafted. Full review scheduled.  |
| WCB | Skenes Creek to Marengo CAP 2002                     | Implementation Committee established, Implementation plan drafted. Full review scheduled. |
| WCB | Glenelg CAP 2004                                     | Implementation commenced. Interim review scheduled.                                       |

### 8.2.4 Regional Coastal Planning Initiatives – Other

Status of other coastal plans that were complete, being developed, or under review during 2006/2007, per Regional Coastal Board region is listed in Table 2.

**Table 2 Status of other coastal plans 2006/2007**

| Region | Title of Plan  | Status                               | Responsibility                     |
|--------|--|--------------------------------------|------------------------------------|
| CCB    | Anderson Inlet Fisheries Reserve Management Plan                                   | Complete                             | DPI Fisheries Victoria             |
|        | Balnarring Foreshore Reserve Coastal Management Plan                               | Developing – See Rocky Shoreline CMP | Balnarring CoM                     |
|        | Barwon Bluff Marine Sanctuary Management Plan                                      | Complete                             | Parks Victoria                     |
|        | Barwon Coast Coastal Management Plan   | Complete                             | Barwon Coast CoM                   |
|        | Buckley Park Foreshore Coastal Management Plan                                     | Complete                             | City of Greater Geelong Council    |
|        | Bunurong Marine National Park Management Plan                                      | Complete                             | Parks Victoria                     |
|        | Capel Sound Coastal Management Plan  | Reviewing                            | Capel Sound Foreshore CoM          |
|        | Churchill Island Marine National Park Management Plan                              | In final approval process            | Parks Victoria                     |
|        | Coastal Priorities for the Central Region  | Complete                             | CCB                                |
|        | Dromana Foreshore Management Plan  | Complete                             | Dromana Foreshore CoM              |
|        | Eastern Port Phillip Bay Aquaculture Fisheries Management Plan                     | Complete                             | DPI Fisheries Victoria             |
|        | Flinders Aquaculture Fisheries Management Plan                                     | Complete                             | DPI Fisheries Victoria             |
|        | French Island Marine National Park Management Plan                                 | In final approval process            | Parks Victoria                     |
|        | Geelong Aquaculture Fisheries Management Plan                                      | Complete                             | DPI Fisheries Victoria             |
|        | Hastings Coastal Management Plan   | Developing                           | Mornington Peninsula Shire Council |
|        | Jawbone Marine Sanctuary Management Plan   | Complete                             | Parks Victoria                     |
|        | Merricks Beach Foreshore Reserve Coastal Management Plan                           | Developing, see Rocky Shoreline CMP  | Merricks Beach Foreshore CoM       |
|        | Mornington Coastal Management Plan   | Developing                           | Mornington Peninsula Shire Council |
|        | Mt Eliza Foreshore Coastal Management Plan   | Complete                             | Mornington Peninsula Shire Council |
|        | Mushroom Reef Management Strategy  | Complete                             | Parks Victoria                     |
|        | Pinnacle Channel Aquaculture Fisheries Management Plan                             | Complete                             | DPI Fisheries Victoria             |
|        | Point Cooke Marine Sanctuary Management Plan                                       | Complete                             | Parks Victoria                     |
|        | Port Phillip Heads Marine National Park Management Plan                            | Complete                             | Parks Victoria                     |
|        | Portsea Foreshore Coastal Management Plan  | Complete                             | Mornington Peninsula Shire Council |
|        | Pt Lillias Aquaculture Fisheries Reserve Management Plan                           | Developing                           | DPI Fisheries Victoria             |
|        | Queenscliffe Coastal Management Plan   | Complete                             | Borough of Queenscliffe & DSE      |
|        | Ricketts Point Marine Sanctuary Management Plan                                    | Complete                             | Parks Victoria                     |
|        | Rocky Shoreline Coastal Management Plan (combines Shoreham, Balnarring & Merricks) | Developing                           | Mornington Peninsula Shire Council |
|        | Sandringham Coastal Management Plan  | Developing                           | Bayside City Council               |
|        | Shoreham Coastal Management Plan   | Developing, see Rocky Shoreline CMP  | Shoreham CoM                       |
|        | Truganina Explosives Reserve Coastal Management Plan                               | Complete                             | Hobsons Bay City Council           |
|        | Yaringa Marine National Park Management Plan                                       | In final approval process            | Parks Victoria                     |
|        | Whitecliffs to Camerons Bight CMP  | Reviewing                            | Whitecliffs to Camerons Bight CoM  |
| GCB    | Andersons Inlet Fisheries Reserve Management Plan                                  | Complete                             | DPI Fisheries Victoria             |
|        | Beware Reef Marine Sanctuary Management Plan                                       | Complete                             | Parks Victoria                     |
|        | Cape Howe Marine National Park Management Plan                                     | Complete                             | Parks Victoria                     |
|        | Corner Inlet Marine National Park Management Plan                                  | Complete                             | Parks Victoria                     |
|        | East Gippsland Regional Catchment Strategy   | Complete                             | East Gippsland CMA                 |



| Region | Title of Plan   | Status                            | Responsibility                                 |
|--------|---|-----------------------------------|--|
| GCB    | Lake Tyers Recreational Fishery Reserve Management Plan   | Complete                          | DPI Fisheries Victoria                         |
|        | Lake Wellington Wetlands Management Plan  | Under Review                      | Parks Victoria                                 |
|        | Mallacoota Inlet Recreational Fishery Reserve Management Plan   | Complete                          | DPI Fisheries Victoria                         |
|        | Marlay Point Foreshore Management Plan  | Developing                        | DSE/CoM  |
|        | Ninety Mile Beach Marine National Park Management Plan  | Complete                          | Parks Victoria                                 |
|        | Point Hicks Marine National Park Management Plan  | Complete                          | Parks Victoria                                 |
|        | Sandy Point Foreshore Management Plan   | Developing                        | DSE/CoM  |
|        | Shallow Inlet Foreshore Management Plan   | Developing                        | DSE/CoM  |
|        | Urban Design Frameworks for Coastal Settlements in South Gippsland (4 Towns)                                    | Complete                          | South Gippsland Shire Council                  |
|        | Urban Design Frameworks for Coastal Settlements in Wellington and East Gippsland Shires (18 Towns)              | Complete                          | Wellington & East Gippsland Shire Councils     |
|        | Wilsons Promontory Marine National Park Management Plan   | Complete                          | Parks Victoria                                 |
|        | Woodside Beach Foreshore Management Plan  | Developing                        | DSE/CoM  |
|        | Gippsland Lakes Future directions and Actions Plan  | Complete                          | Gippsland Lakes Taskforce                      |
| WCB    | Anglesea River & Estuary Management Plan  | Complete                          |  |
|        | Surf Coast Shire  |                                   |  |
|        | Anglesea Riverbank Master Plan  | Complete                          | Surf Coast Shire                               |
|        | Apollo Bay Structure Plan   | Complete                          | Colac Otway Shire                              |
|        | Beach Cleaning Management Plan  | Complete                          | Warrnambool City Council                       |
|        | Belfast Lough Environmental Management Plan   | Complete and awaiting endorsement | Moyne Shire                                    |
|        | Coastal Spaces – planning scheme amendment  | Developing                        |  |
|        | Moyne Shire   |                                   |  |
|        | Corangamite Fishery Management Plan   | Developing                        | Department of Primary Industries               |
|        | Corangamite Region Wetland Strategy   | Complete                          | Corangamite CMA                                |
|        | Corangamite Regional River Health Strategy  | Complete                          | Corangamite CMA                                |
|        | Curdies River Estuary Management Plan   | Developing                        | Corangamite and Moyne Shire Councils           |
|        | Deep Creek Master Plan  | Complete                          | Surf Coast Shire                               |
|        | Discovery Bay Marine National Park Draft Management Plan  | Complete                          | Parks Victoria                                 |
|        | Environment and Land Management Plan  | Complete                          | Great Ocean Road Coast Committee of Management |
|        | Environmental Strategic Framework   | Developing                        | Glenelg Shire Council                          |
|        | Fitzroy Estuary Management Plan   | Complete                          | Glenelg Hopkins CMA                            |
|        | Flood Study for Port Fairy  | Developing                        | GHCMA & Moyne                                  |
|        | Glenelg Hopkins Fishery Management Plan   | Complete                          | Department of Primary Industries               |
|        | Glenelg Hopkins River Health Strategy   | Complete                          | Glenelg Hopkins CMA                            |
|        | Glenelg River Estuary Management Plan   | Complete                          | Glenelg Hopkins CMA                            |
|        | Glenelg Strategic Futures Plan  | Developing                        | Glenelg Shire Council                          |
|        | Great Otway National Park and Otway Forest Park Management Plan   | Developing                        | Parks Victoria                                 |
|        | Hopkins River Estuary Management Plan   | Complete                          | Glenelg Hopkins CMA                            |
|        | Indigenous Partnership Strategy   | Complete                          | Parks Victoria                                 |
|        | Levy's Point Coastal Reserve Management Plan  | Complete                          | Warrnambool City Council                       |
|        | Marengo Reefs Marine Sanctuary Draft Management Plan  | Complete                          | Parks Victoria                                 |
|        | Merri Estuary Management Plan   | Draft to be released              | Glenelg Hopkins CMA                            |
|        | Merri Marine Sanctuary Management Plan  | Complete                          | Parks Victoria                                 |
|        | Painkalac Creek Environmental Flow Determination  | Developing                        | Corangamite CMA                                |
|        | Painkalac Creek Estuary Management Plan   | Complete                          | Surf Coast Shire                               |
|        | Pathway strategy  | Complete                          | Surf Coast Shire                               |
|        | Peterborough UDG Amendment  | Developing                        | Moyne Shire                                    |
|        | Point Addis Marine National Park, Point Danger Marine Sanctuary and Eagle Rock Marine Sanctuary Management Plan | Complete                          | Parks Victoria                                 |
|        | Pollution Source Investigation for Lorne  | Developing                        | Surf Coast Shire                               |
|        | Port Fairy East Beach Coastal Erosion Engineering & Feasibility Study   | Developing                        | Moyne Shire & DSE                              |
|        | Portland Aquaculture Fisheries Reserves Management Plan   | Complete                          | Department of Primary Industries               |
|        | Portland Bay Coastal Infrastructure Plan  | Developed                         | Glenelg Shire Council                          |
|        | South Warrnambool Wetlands Management Plan  | Complete                          | Warrnambool City Council                       |
|        | Surry Estuary Management Plan   | Drafted                           | Glenelg Hopkins CMA                            |
|        | The Craggs Management Plan  | Complete                          | Moyne Shire                                    |
|        | Torquay / Jan Juc Structure Plan  | Complete                          | Surf Coast Shire                               |
|        | Torquay Foreshore Masterplan  | Complete                          | Great Ocean Road Coast Committee of Management |
|        | Twelve Apostles Marine National Park and The Arches Marine Sanctuary Management Plan                            | Complete                          | Parks Victoria                                 |
|        | Warrnambool Foreshore Management Plan   | Complete                          | Warrnambool City Council                       |
|        | Waste Water Management Plan   | Developing                        | Surf Coast Shire                               |
|        | Wastewater Management Plan – Moggs Creek  | Developing                        | Surf Coast Shire                               |
|        | White's Beach Master Plan – Stage 1   | Complete                          | Surf Coast Shire                               |
|        | White's Beach Master Plan – Stage 2   | Developing                        | Surf Coast Shire                               |
|        | Wye River/Sep Creek/Kennett River Structure Plan  | Developing                        | Colac Otway Shire                              |
|        | Yambuk Lake Estuary Management Plan   | Complete                          | Glenelg Hopkins CMA                            |

## Regional Coastal Boards

Regional Coastal Boards contributed to planning initiatives in their regions. Ten Coastal Action Plans (CAPs) now exist in the Western Coastal Region, four in the Gippsland Coastal Region and four in the Central Coastal Region. In addition all three Boards:

- Made submissions, provided input into development proposals, participated on steering groups and made presentations to panels on a wide range of statutory and strategic planning issues
- Participated in management planning for Marine National Parks and Marine Sanctuaries in all regions
- Participated on Regional Catchment Investment Planning (RCIP) steering committees and technical assessment groups in Catchment Management Authority regions
- Facilitated the implementation of the coastal and marine actions in Regional Catchment Strategies and the inclusion of coastal management issues into Regional Catchment Investment Plans.

## Central Coastal Board

- Continued implementation of Corio Bay Coastal Action Plan and commenced implementation of Mount Eliza to Point Nepean Coastal Action Plan.
- Gained Victorian Coastal Council approval and Ministerial endorsement of Boating Coastal Action Plan (CAP).
- Prepared final Boating CAP for printing and production of hard copy, CD and web based formats.
- Continued work towards preparation of an Inception Report for a Western Port CAP.
- Completed a project funded through the Natural Heritage Trust, in partnership with the Port Phillip & Westernport CMA, to report on progress and facilitate implementation of the coastal and marine actions of the Port Phillip & Western Port Regional Catchment Strategy.
- Participated on the Reference Group for the City of Casey Coastal Strategy, covering coastal planning issues, including impact of climate change, protection of the coast's natural features, infrastructure capacity and recreation and growth pressures from the south east growth corridor, proposed through Melbourne 2030.
- Investigated opportunities for application of the Parks Victoria levels of service framework to other public land areas along the coast and facilitated a statewide approach and preparation of a scoping document for further investigation.
- Completed an audit of planning schemes in relation to adoption of tools developed under the Coastal Management Planning Project 2001 and the extent to which objectives of the Victorian Coastal Strategy are met through planning schemes.

## Gippsland Coastal Board

- Completed the second stage of the Impact of Climate Change on the Gippsland Coast project, which included a vulnerability assessment, modelling of the potential impacts on key sites, and adaptations.
- Participated on the project control group overseeing the completion of Urban Design Frameworks for eighteen coastal settlements in Wellington and East Gippsland Shires, and a further four settlements in South Gippsland Shire.
- Supported Wellington Shire Council in the development of its program to address inappropriate coastal subdivisions along the 90-Mile Beach.
- Completed the development and approvals processes for the Gippsland Estuaries Coastal Action Plan
- Considered strategic implications of development proposals around Anderson Inlet and the Gippsland Lakes, and provided appropriate responses to the decision-making processes.
- Continued discussions and development of the 'Coastal Summer Census' to better understand the pressures that the coast experiences during the summer months.
- Participated in the project undertaking digital elevation modelling to enable greater understanding of the impacts of climate change and sea levels in Gippsland.
- Provided feedback on the scoping document for *A Levels of Service Framework for the Coast*.
- Initiated the Gippsland Lakes Boating Amenity and Sustainable Infrastructure Study (BASIS) to determine the sustainable level of boats and boat related infrastructure that can occur in the Gippsland Lakes without unduly detracting from the natural values of the area. The outcomes of this study will be used to inform the review of the Gippsland Boating CAP.

## Western Coastal Board

- Implementation Committees (ICs) for the Central West Regional CAP, Central West Estuaries CAP, South West Estuaries CAP, and South West Regional CAP met throughout the year to develop and refine Implementation Plans for CAPs. An IC was established for the Skenes Creek to Marengo CAP and ICs have been committed to the Moyne, Warrnambool and Glenelg CAPs for establishment in 2007/08.





- Commenced preparations for the statutory 5-year review of most CAPs in the region, including discussions regarding potential second generation CAPs for the region.
- Committed to the process of developing a Boating CAP over the coming two financial years.
- Exhibited and undertook regional consultation for draft Coastal Access Guidelines for the West Coast of Victoria.
- Commenced project development and funding applications for a Coastal Priorities project for 2007/08.

### 8.3 Protecting the Environment

WCB, CCB and GCB participated as members of the Marine National Parks Management Plan Advisory Group for Marine National Parks and Marine Sanctuaries in their regions. All three Boards identified a range of objectives and actions for protecting the natural environment through Coastal Action Plans and promoted environmental objectives through participating in planning processes.

#### Central Coastal Board

- Contributed to finalising the Port of Hastings Strategic Land Use and Transport Corridor Planning Study, ensuring appropriate assessment of environmental impacts among the Port precinct and berthing options, including assessment of impacts and cumulative effects across the whole of Western Port, as well as the Port environs.
- Contributed to whole of State Government response on Supplementary Environment Effects Statement for proposed channel deepening in Port Phillip Bay.
- Commenced planning for development of environmental management plans and/or improved environmental management practices for marinas, in partnership with the Boating Industry Association and the Marina Industries Association of Australia's Clean Marinas accreditation.
- Contributed to planning for the next stage of the Western Port Greenhouse Alliance Climate Change Adaptation project which will focus on impacts of climate change on human settlements; enhance capacity and knowledge of local government, state government and other decision makers in the Western Port region to prepare for and adapt to climate change; and develop an approach to climate change assessment and adaptation that has transferability to other regions in Australia.

#### Gippsland Coastal Board

- Participated on the Gippsland Integrated Natural Resources Forum, contributing to the development of the Gippsland Resources Report Card 2007 and attending the *Investing in Iconic Assets* workshop.
- Ongoing participation in the Gippsland Lakes Taskforce.
- Coordinated the ongoing implementation of the Gippsland Lakes Future Directions Action Plan. Our Environment Our Future plans to further improve the health of the Gippsland Lakes through funding of \$6 million over the next three years for a range of initiatives, with \$2.25 million allocated in 2006/2007.
- Successfully launched the Corner Inlet Environmental Audit in Foster. Continued development of a joint organisational approach to implement the recommendations, reducing the impact of the catchment on seagrass distribution in the Inlet. This included attendance at a meeting of the Australian Government Natural Resource Management facilitators to investigate options for investment across a number of streams of NHT, with a clear focus on improving the health of Corner Inlet.
- Ongoing contribution to the steering committee for the West Gippsland CMA project – Impacts of Climate Change and Adaptations.
- The GCB Chair acted as an independent Chair of the steering committees for the Mallacoota Inlet Recreational Fisheries and the Lake Tyers Recreational Fisheries Management Plans.
- The GCB Chair participated in the East Gippsland Technical Reference Assessment Panel to provide advice on the technical worth and priority for NHT bids in the region.
- Continued participation in the decision making process for the artificial opening of estuaries in Gippsland.
- Significant involvement with the emergency response during the summer bushfire season and follow up evaluation of the potential impacts on the coastal environments, including the Gippsland Lakes, and on the Board's Business Plan.

#### Western Coastal Board

- Participated in the establishment of a coastal vulnerability study for the Victorian coast.
- Convened a meeting of local councils and agencies to develop an Estuary Management Plan for the Curdies Estuary.

- Participated on steering committee for the Great Ocean Road Coast Committee's Environment and Land Management Plan.
- Contributed to the Glenelg Hopkins and Corangamite CMAs' Noxious Weeds Reviews.
- Worked in partnership with Coast Action/Coastcare and the Corangamite CMA to deliver a 2-year Dune Rehabilitation in partnership with land managers.
- Provided input to Corangamite CMA's estuaries investment for Water White Paper funding
- Obtained advice from Fisheries Victoria regarding abalone virus management
- Completed work on a research grant to Deakin University for investigating ecological effects of beach wrack

## 8.4 Improved Recreation and Tourism

Victoria's coast continues to increase in popularity as a destination for recreation and tourism. This continuing trend means rising demands on coastal resources and infrastructure. Effective management is required to minimise the negative impacts of this increase.

In 2006/07, 247 applications for use and development of coastal Crown land pursuant to the *Coastal Management Act 1995* were received and assessed by delegates of the Minister for Water, Environment and Climate Change. 239 applications were approved and 8 were unsuccessful. Successful applications have an estimated total value in excess of \$35,668,758 and were predominantly for maintenance and upgrades (see Figure 1). This is compared to 218 applications in 2005/06, with 202 successful applications having an estimated total value in excess of \$50,825,600.

Council notes continuing investment through the Government's Boating Safety and Facilities Program, the Recreational Fishing Grants Program and the DSE's Coastal Risk Mitigation Program. All are contributing to safer facilities and experiences for coastal visitation and use.

### Central Coastal Board

- Developed the Boating CAP for improved recreational boating facilities, access to boating and levels of service in Port Phillip and Western Port.
- Provided input to Western Coastal Board's draft Access Guidelines for the West Coast, with a view to developing a model for statewide application and provide significant benefits for recreation and tourism.
- Commenced implementation of Mt Eliza to Pt Nepean CAP and continued implementation of Corio Bay CAP, both of which focus on recreational use of the coast.

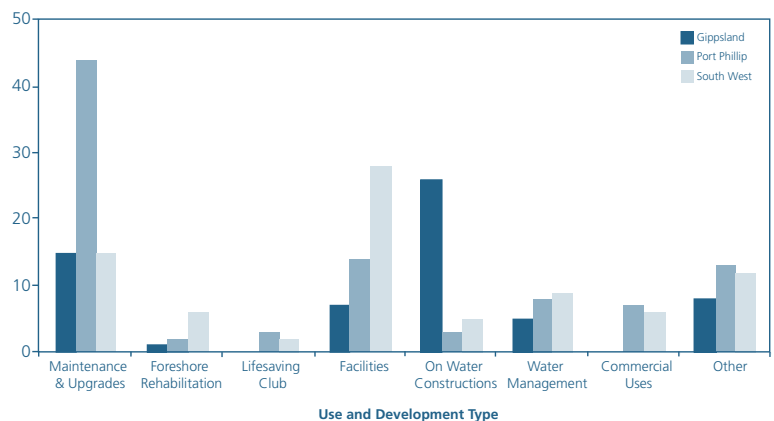
### Gippsland Coastal Board

- Contributed to the development of the East Gippsland Shire Tourism Strategy
- Participated in the development of the Tourism Victoria/Parks Victoria Nature Based Tourism Strategy
- Continued work with DSE, East Gippsland and Wellington Shires on identifying appropriate opportunities for improving boating facilities around the Gippsland Lakes
- Participated on the Technical Reference Group for the proposed Open Ocean Access Boat ramp at Mallacoota. Provided a submission during the public exhibition phase of the Environmental Effects Statement.

### Western Coastal Board

- Consulted land managers on a proposed Levels of Service Framework, as part of the VCS review/revision process.
- Developed a SW walking trail network through the Department of Victorian Communities.
- Continued work on the Torquay Boat Launching Facility Feasibility Study.
- Contributed to the development of coastal Crown land at Lorne consistent with Lorne CAP.
- Participated in a shared approach to dog access on beaches in the Surf Coast Shire.
- Participated in the establishment of a network for Victorian foreshore caravan parks and camping grounds.
- Participated in the Parliamentary Inquiry into Rural and Regional Tourism.
- The Board's draft Access Guidelines for the West Coast are intended to provide significant benefits for recreation and tourism.

Figure 1: Coastal Management Act consents 2006–07





## 8.5 Maintaining and Improving Coastal Water Quality

The ongoing facilitation of partnerships between stakeholders is essential to achieving improved coastal water quality. Regional Coastal Boards continue to play an important role in facilitating these partnerships regionally. They also provide input to regional water strategies by emphasising the need for water quality protection in coastal and estuarine systems.

### Central Coastal Board

- Continued participation on the Steering Committee for the Water Quality Improvement Plan for Port Phillip & Western Port, and oversight of interim projects for risk assessment, water sensitive urban design, agricultural best management practice, nutrient offsets, beach water quality, decision support and monitoring.
- Commenced a full review of the Port Phillip Bay Environmental Management Plan, with engagement of key stakeholders, including DSE, EPA and Melbourne Water, in preparation of the terms of reference, natural resource management audit methodology, and draft project proposal.
- Worked in partnership with Parks Victoria to help link catchment management outcomes with management programs for Yaringa Marine National Park in Western Port, to improve catchment water quality in Watson Creek and minimise impacts on the marine environment.

### Gippsland Coastal Board

- Participated in, and contributed financially to, the Gippsland Regional Water Monitoring Partnership.
- Implemented the Gippsland Lakes Boat Pump Out Project and sought out opportunities for ongoing funding and maintenance.
- Contributed to finalising the East and West Gippsland Water Quality Strategy.
- Participated on the Steering Committee developing the Gippsland Lakes Environmental Water Reserve.
- GCB Chair continued role as Chair of the Latrobe Environmental Flow steering committee for the West Gippsland CMA.
- Continued with development of a project to evaluate the water quality benefits of a barrier at McLennan's Straits.

### Western Coastal Board

- Continued participation on the Steering Committee for Corangamite CMA's Estuary Watch project.
- Implementation of both the Central West and South West Estuaries CAPs include actions targeted at improving estuarine water quality. The development of Estuary Management Plans consistent with the frameworks outlined in CAPs is progressing well.
- Provided input to several applications for Water Licences via Southern Rural Water.

## 8.6 Increasing Awareness and Understanding of Coastal Issues

Promoting awareness and understanding of coastal and marine issues is an ongoing priority for Council. Throughout the year Council has undertaken a range of activities including:

- Delivering presentations at international fora and meetings with international delegations
- Developing and launching the *Coastlinks* web portal as a one-stop-shop for accessing information about Victoria's coastal and marine environment and management ([www.coastlinks.vic.gov.au](http://www.coastlinks.vic.gov.au)). This portal is based on the Western Coastal Board's very successful *West Victorian Coast and Marine Information Reference* site
- Recognising excellence through the Victorian Coastal Awards for Excellence
- Issuing media releases and comment via print media and newsletters
- Maintaining its website [www.vcc.vic.gov.au](http://www.vcc.vic.gov.au). Council notes that 101 800 visitors accessed the site in 2006/07.

### Central Coastal Board

- Held forums with individual bayside municipalities to discuss progress on implementing the Victorian Coastal Strategy through planning schemes and to ensure the inclusion of the Strategy in reviews of Municipal Strategic Statements.
- Held a workshop with the Association of Bayside Municipalities' Technical Officers to undertake an evaluation of progress of implementing Coastal Management Planning Projects conducted in 2001 and to identify barriers for implementation and further work to improve coastal planning.
- Attended regular meetings of Association of Bayside Municipalities.
- Facilitated an Integrated Catchment Management group, comprising communities in the Watson Creek area and various agencies who have a role in catchment management, to be led by the Mornington Peninsula and Western Port Biosphere Reserve Foundation. The group will develop

and implement an action plan to help link catchment management outcomes with management programs for Yaringa Marine National Park in Western Port for improved water quality.

- Produced seven editions of *About the Bays* newsletter for distribution to over 350 stakeholders.
- Regularly updated the Board's website throughout the year and introduced a Members' access area.

### Gippsland Coastal Board

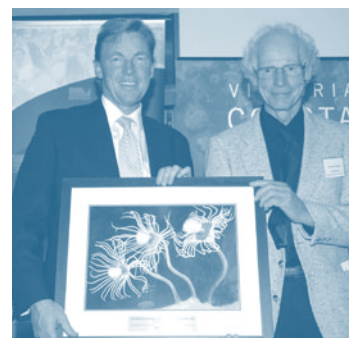
- Conducted meetings with Local Governments, West Gippsland CMA, Gippsland Ports and East Gippsland Water on coastal issues.
- Hosted workshops in Leongatha and Bairnsdale on the Impacts of Climate Change on the Gippsland Coast.
- Continued with the applying MERGe to the Gippsland Coast project.
- Delivered presentations to community groups and other forums on various coastal issues.
- Provided advice to the South Gippsland Shire Council on inappropriate subdivisions and the potential impacts of the Land Subject to Inundation Overlay, and climate change in Corner Inlet.

### Western Coastal Board

- Held the 2006 SW Foreshore Managers Forum in partnership with DSE and four CoMs – the Great Ocean Road Coast Committee, Bellarine Bayside CoM, Barwon Coast CoM and Apollo Bay-Kennett River CoM. The forum was attended by 50 delegates.
- Continued support and chairing of the Glenelg Hopkins Coast and Marine Technical Working Group.
- Undertook a review of the Board's website and completed a student-perspective assessment of the web portal.
- Continued participation in the South West Sustainability Partnership.
- Provided feedback to Geoff Wescott regarding his independent review of the *Coastal Management Act*.
- Commenced a feasibility study for a Mobile Marine Interpretative Facility.
- Conducted joint meetings with the Boards of both the Glenelg Hopkins and Corangamite CMAs.
- Established a Working Party with the Corangamite CMA to progress a cooperative approach to the alignment of activities, strategic directions and collaboration.
- Assisted in planning the field trip component of the Vic Estuaries 06 Conference.
- Member of the Wimmera Glenelg-Hopkins Corangamite Research Hub.
- Participated in DSE's Sustainable Settlements project and Integrated Regional Planning project.
- Provided quarterly reports to key stakeholders to promote understanding of coastal issues and the activities of the WCB.
- Awareness, understanding and opportunities for involvement in coastal planning and management were promoted through meetings with a range of stakeholders.



Victorian Coastal Awards for Excellence 2007 category recipients, former Minister for Water, Environment and Climate Change, the Hon. John Thwaites MP, and Diane James, Chairman, VCC.



John Ariens, Lifetime Achievement Coastal Award for Excellence recipient and former Minister for Water, Environment and Climate Change, the Hon. John Thwaites MP.



Harry Breidahl, Outstanding Individual Achievement Coastal Award for Excellence recipient and former Minister for Water, Environment and Climate Change, the Hon. John Thwaites MP.

# 9

## Regional Coastal Boards

Regional Coastal Boards continue to play a significant role in coastal planning and management in their regions by facilitating outcomes and participating in a wide range of initiatives led by partner agencies and stakeholders. Key areas of involvement include:

- The development, implementation and review of Coastal Action Plans
- Facilitating regional coordination and priority setting
- Encouraging implementation of the Victorian Coastal Strategy.

A summary of some of the activities that have been actively pursued by the Boards has been noted in preceding sections.

For further information refer to the Board's internet sites which are:

[www.wcb.vic.gov.au](http://www.wcb.vic.gov.au)

[www.ccb.vic.gov.au](http://www.ccb.vic.gov.au)

[www.gcb.vic.gov.au](http://www.gcb.vic.gov.au)

# 10

## Council Operations

### 10.1 Administration

Council's office is Level 2, 8 Nicholson Street, East Melbourne 3002.

Telephone 9637 9456 Fax 9637 8592 Email [vcc@dse.vic.gov.au](mailto:vcc@dse.vic.gov.au)

Website [www.vcc.vic.gov.au](http://www.vcc.vic.gov.au)

*Chairman* Diane James (Until 30 June 2007)

*Executive Officer* Andrew Buckley (Until April 30 2007)

Jacqui McLeod (Acting Executive Officer, 30 April – 30 June 2007)

David Harper (Current Executive Officer as of 9 July 2007)

The Executive Officer is responsible for managing the day to day operations of the Council and staff.

*Staff:* Number by employment status for the majority of the year (full time equivalent)

| Employment          | 2006–2007 |      |       | 2005–2006 |      |       |
|---------------------|-----------|------|-------|-----------|------|-------|
| Type                | Female    | Male | Total | Female    | Male | Total |
| Ongoing             | 1.5       | 1    | 2.5   | 1         | 1    | 2     |
| Fixed Term          | 0         | 0    | 0     | 0         | 0    | 0     |
| Temporary Employees | 0         | 0    | 0     | 0.5       | 0    | 0.5   |
| Total               | 1.5       | 1    | 2.5   | 1.5       | 1    | 2.5   |

### Notes

(a) Staff employed through employment agencies are included under temporary employees.

(b) VCC ongoing staff are also included in employment statistics for the Department of Sustainability and Environment.

(c) VCC employed a male temporary employee between December and March to fill a vacant position.

(d) One female temporary employee became an ongoing employee in 2006/07 and is 0.5

(e) One female employee was seconded to the Executive Officer position for a period of two months

### 10.2 Statement of Pecuniary Interests

All members of Council and the Executive Officer have completed declarations of pecuniary interests for the current reporting period including details of shares held by members.

Declarations of pecuniary interest in relation to agenda items are sought at the commencement of any business meeting and noted in the minutes of the meeting.

### 10.3 Consultancies and Contracts

During 2006/07 Council did not engage any consultants or enter into any major contracts as defined by the Department of Treasury and Finance guidelines.

### 10.4 Publications

Council produced the following publications during the year:

- Annual report 2005/06 – available from the VCC and via website
- Media releases – available via website
- Coastal Spaces Landscape Assessment Study – State Overview Report, and a range of local level documents (DSE publications) – available via DSE website
- Emerging Scientific Issues on Victoria's Coast – available via website

During 2006/07 Council's major promotional activity was the eighth Victorian Coastal Awards for Excellence (April 2007).

### 10.5 National Competition Policy

The Council adheres to the principles of the National Competition Policy (NCP) to ensure that any business competition with private entities takes place in an environment where the Council has no competitive advantages. Obligations under the NCP are the responsibility of the Corporate Finance Division of the Department of Sustainability and Environment.

### 10.6 Freedom of Information (FOI)

The *Freedom of Information Act* 1982 allows the public a right of access to documents held by the Council. The Council operates in accordance with FOI procedures established through the Department of Sustainability and Environment. A request must be in writing and a fee of \$22.00 for 2007/08 is payable. No FOI requests were made to Council in this business year. FOI requests can be made to the Authorised Officer for DSE, Deidre Egan, ph 9637 8575 (see s10.10 for additional contact details).

### 10.7 Merit and Equity

Victorian Public Service merit and equity principles are applied in the appointment and management of staff. The VCC follows the merit and equity principles used by the Department of Sustainability and Environment in accordance with the Public Administration Act 2004.

### 10.8 A Culturally and Linguistically Diverse Society

The Council ensured that the final version of the Victorian Coastal Strategy released in January 2002 included published material in agreed priority multi-lingual text advising on where to obtain further information on the Victorian Coastal Strategy.

### 10.9 Women, Youth and Indigenous Affairs

Council is committed to involving Victoria's community, including women, youth and indigenous Victorians in the management and enjoyment of the coast. The Victorian Coastal Strategy identifies actions to implement indigenous cultural outcomes and to improve communications with Aboriginal communities in coastal areas, while Council's business plan includes actions to strengthen community involvement in coastal planning and management. In addition, Council operates in an environment ensuring equity in Council's processes and participation with stakeholders.

Council provided a bronze sponsorship (\$5,000) to support the International Youth Coastal Conference 2006, Port Phillip Bay, 15-18 October 2006.

### 10.10 Whistleblowers Protection Act

The *Whistleblowers Protection Act* 2001 is designed to protect people who disclose information about serious wrongdoing within the Victorian Public Sector and to provide a framework for the investigation of these matters.

The Protected Disclosure Coordinator for the Department of Sustainability and Environment acts as an agent for the Victorian Coastal Council to receive disclosures under the *Whistleblowers Protection Act* 2001 and applies departmental procedures in managing disclosures. Disclosures may also be made directly to the Ombudsman. The contact details for the Protected Disclosure Coordinator and Ombudsman are:

Deidre Egan, Protected Disclosure Coordinator  
Department of Sustainability and Environment  
PO Box 500, East Melbourne Vic 3002.  
Telephone: 9637 8575 Facsimile: 9637 8129 Email: Deidre.Egan@dse.vic.gov.au

The Ombudsman Victoria  
Level 9, North Tower, 459 Collins Street, Melbourne Vic 3000.  
Telephone: 9613 6222 Toll free: 1800 806 314

No disclosures were made during 2006/07.

### 10.11 Overseas travel

East Asian Seas Congress, Haikou City, China – Diane James attended the Congress, and jointly convened the workshop "Management Effectiveness of Marine Protected Areas – Report on IMPAC1 Outcomes" with the DSE and Parks Victoria. Diane chaired a theme on "Ecosystem Base Management: From River Basins to Coastal Seas", presented on Leadership, and also presented to the Ministerial forum.

### 10.12 Building Act 1993

The Council uses DSE facilities to perform its operations – refer to the DSE Annual Report



# 11 Budget and Expenditure

## 11.1 Budget and Expenditure

The operating budget of the Council is provided within the budget of the Department of Sustainability and Environment.

The financial operations of the Council have not been separately audited. Audited statements are incorporated into the overall financial statements of the Department of Sustainability and Environment Annual Report for the year ended 30 June 2007 and it is considered unnecessary for Council to have a separate audit committee. The table below shows expenditure incurred against the allocations provided for the 2006/07 financial year.

|  | 2006–2007        |                  | 2005–2006        |                  |   | 2004–2005        |                  | 2003–2004        |                  | 2002–2003        |                  |
|--|------------------|------------------|------------------|------------------|---|------------------|------------------|------------------|------------------|------------------|------------------|
|  | Budget           | Expenditure      | Budget           | Expenditure      |   | Budget           | Expenditure      | Budget           | Expenditure      | Budget           | Expenditure      |
| <b>Council Operation</b><br>(includes all sitting fees and reimbursements, secretariat expenses, training and items such as annual report). Specific project operating expenses are included against key result areas. | \$182,000        | \$172,174.26     | \$167,000        | \$182,630        |   | \$163,000        | \$193,601        | \$167,000        | \$192,482        | \$116,000        | \$110,000        |
|  |                  |                  |                  |                  | <b>Scientific Panel Support</b>   | –                | –                | –                | –                | \$5,000          | \$1,000          |
|  |                  |                  |                  |                  | <b>Regional Coastal Boards support</b>  | \$5,000          | \$4,123          | \$5,000          | \$1,947          | \$5,000          | \$12,000         |
| <b>Business Plan – Implementation</b>  |                  |                  |                  |                  | <b>Business Plan</b> – Key Result Areas reported against 2001/02 to 2004/05                                     |                  |                  |                  |                  |                  |                  |
| <b>Key Result Area 1</b><br>– Reposition Coastal Values through Leadership and Advocacy  | \$15,000         | \$15,859         | \$52,000         | \$55,347         | <b>Key Result Area 1</b><br>– Strategic Planning, Victorian Coastal Strategy review program                     | \$42,000         | \$54,714         | \$40,000*        | \$45,740         | \$60,000         | \$55,000         |
| <b>Key Result Area 2</b><br>– Provide Strategic Direction for Coastal Planning and Management  | \$30,000         | \$30,060         | \$5,000          | \$0              | <b>Key Result Area 2</b><br>– Coordination, project funding, management and training                            | –                | –                | \$10,000         | \$11,426         | \$30,000         | \$28,000         |
| <b>Key Result Area 3</b><br>– Coordinate the Implementation of the VCS and CAPs  | \$15,000         | \$10,330         | \$7,000          | \$389            | <b>Key Result Area 3</b><br>– Community Awareness and Involvement, Awards for Excellence, updates on activities | \$20,000         | \$7,912          | \$15,000         | \$23,949         | \$40,000         | \$50,000         |
| <b>Key Result Area 4</b><br>– Practice Good Governance and Accountability  | \$0              | \$0              | \$0              | \$0              | <b>Key Result Area 4</b><br>– Leadership and Advocacy, provision of advice                                      | \$10,000         | \$150            | \$3,000          | \$0              | \$14,000         | \$14,000         |
| <b>TOTAL:</b>  | <b>\$242,000</b> | <b>\$228,424</b> | <b>\$231,000</b> | <b>\$238,366</b> |   | <b>\$240,000</b> | <b>\$260,500</b> | <b>\$240,000</b> | <b>\$275,545</b> | <b>\$270,000</b> | <b>\$270,000</b> |

\*Plus \$10,000 carried forward from 02/03

In addition to these figures, the DSE operated a separate budget for the review and revision of the Victorian Coastal Strategy. The budgeted costs of \$199,346 included drafting of the Strategy, market research, economic research, consultation, an impacts summary paper for climate change, and contingency. Total expenditure for the 2006/07 year was \$168,013.49 (please see DSE Annual Report for more details).

## 11.2 Operating Position

There were no significant changes in financial position during the year. There were no major changes or factors affecting performance. There were no subsequent events that will affect performance in future years. Operations are managed in accordance with DSE procedures and guidelines for expenditure, purchasing and reporting.



PHOTO: SPOONBILLS – COAST ACTION/COASTCARE SNAPSHOTS

# 12 Disclosure Index.

The 2006/2007 Annual Report of the Victorian Coastal Council is prepared in accordance with all relevant Victorian legislation. This index has been prepared to facilitate identification of the Council's compliance with statutory disclosure requirements.

| FRD | DISCLOSURE  | PAGE      |
|-----|---|-----------|
| 22B | Manner of establishment and the relevant Ministers  | 3, 7      |
| 22B | Objectives, functions, powers and duties  | 7         |
| 22B | Nature and range of services provided   | 3–6       |
| 22B | Organisational structure, names and functional areas of responsibility of senior officers | 8         |
| 22B | Names of board members  | 8–12      |
| 22B | Statement of workforce data for current and previous financial year                       | 21        |
| 22B | Merit and equity  | 22        |
| 15A | Executive officer disclosures   | NA        |
| 22B | 5-year summary of the financial results   | 23        |
| 22B | Significant changes in financial position during the year                                 | None (23) |
| 22B | Objectives and performance against objectives   | 13–20     |
| 22B | Major changes or factors affecting performance  | 23        |
| 22B | Subsequent events which will affect operations in future years                            | 23        |
| 22B | Details of consultancies > \$100,000  | None (22) |
| 22B | Details of consultancies – total No. and cost < \$100,000                                 | None (22) |
| 12A | Disclosure of major contracts   | None (22) |
| 22B | Application and operation of <i>Freedom of Information Act</i> 1982                       | 22        |
| 22B | Application and operation of the <i>Whistleblowers Protection Act</i> 2001                | 22        |
| 22B | Compliance with building and maintenance provisions of <i>Building Act</i> 1993           | 22        |
| 22B | Statement on National Competition Policy  | 22        |
| 22B | Occupational Health and Safety*   | 24        |
| 10  | Disclosure index  | 24        |
| 22B | Statement of availability of other information  | 24        |
| 29  | Workforce and Data Disclosures  | NA        |

\* See Department of Sustainability and Environment Annual Report. Operations are managed in accordance with DSE procedures and guidelines for occupational health and safety and industrial relations and related issues.

Information relevant to the headings listed in Financial Reporting Direction 22B of the *Financial Management Act* 1994 is held at the VCC's office and is available on request, subject to the *Freedom of Information Act* 1982.



PHOTO: TORQUAY FORESHORE – IAN WALTON

# Acronyms used

|               |  |
|---------------|--|
| <b>CAP</b>    | Coastal Action Plan  |
| <b>CCB</b>    | Central Coastal Board  |
| <b>CMA</b>    | Catchment Management Authority   |
| <b>CMP</b>    | Coastal Management Plan  |
| <b>CoM</b>    | Committee of Management  |
| <b>DPI</b>    | Department of Primary Industries   |
| <b>DSE</b>    | Department of Sustainability and Environment                               |
| <b>EPA</b>    | Environment Protection Authority   |
| <b>GCB</b>    | Gippsland Coastal Board  |
| <b>ICZM</b>   | Integrated Coastal Zone Management   |
| <b>MoU</b>    | Memorandum of Understanding  |
| <b>NHT</b>    | Natural Heritage Trust   |
| <b>NRM</b>    | Natural resource management  |
| <b>PEMSEA</b> | Partnerships for Environmental Management of the Seas of East Asia program |
| <b>RCIP</b>   | Regional Catchment Investment Plan   |
| <b>RCS</b>    | Regional Catchment Strategy  |
| <b>UDF</b>    | Urban Design Framework   |
| <b>VCC</b>    | Victorian Coastal Council  |
| <b>VCS</b>    | Victorian Coastal Strategy   |
| <b>WCB</b>    | Western Coastal Board  |

Victorian Coastal Council  
2/8 Nicholson Street  
East Melbourne Vic 3002  
Telephone (03) 9637 9456  
Facsimile (03) 9637 8592  
[www.vcc.vic.gov.au](http://www.vcc.vic.gov.au)

